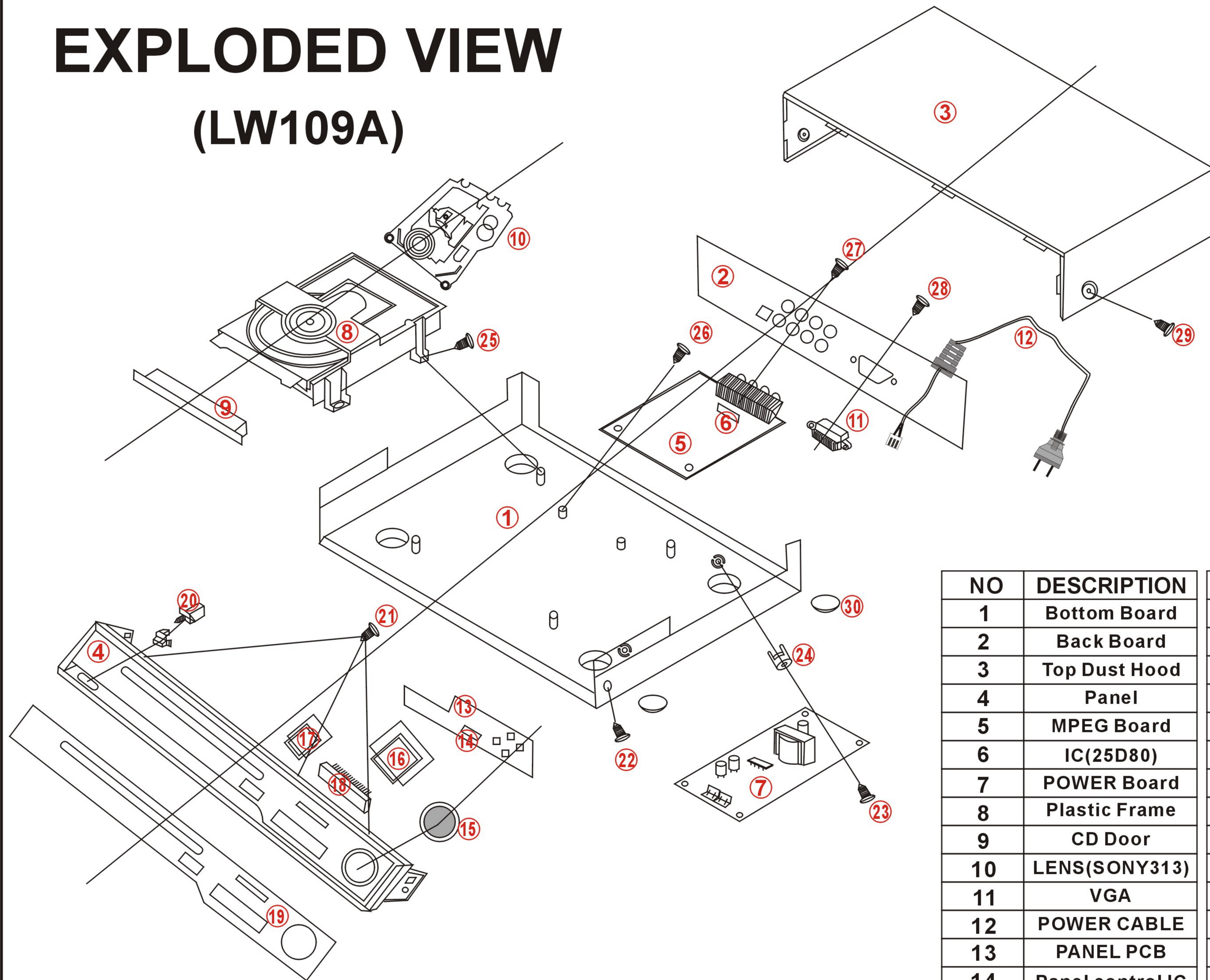


EXPLODED VIEW

(LW109A)

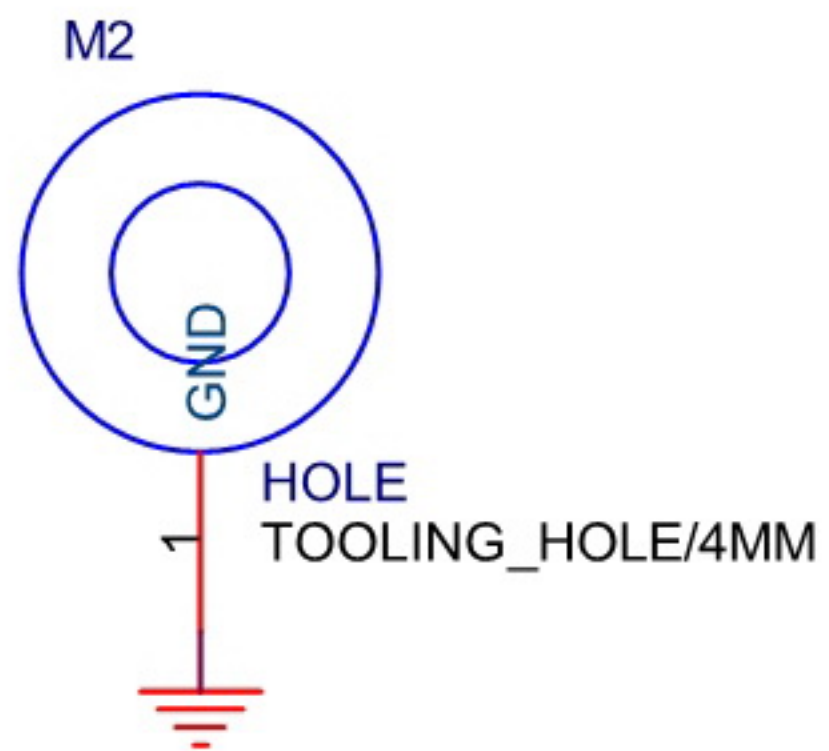
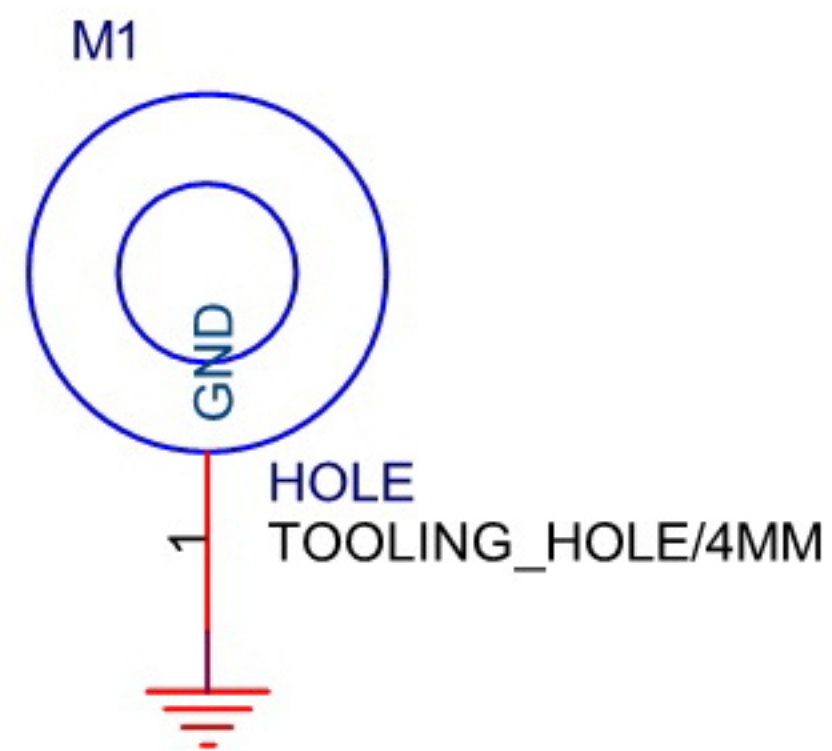
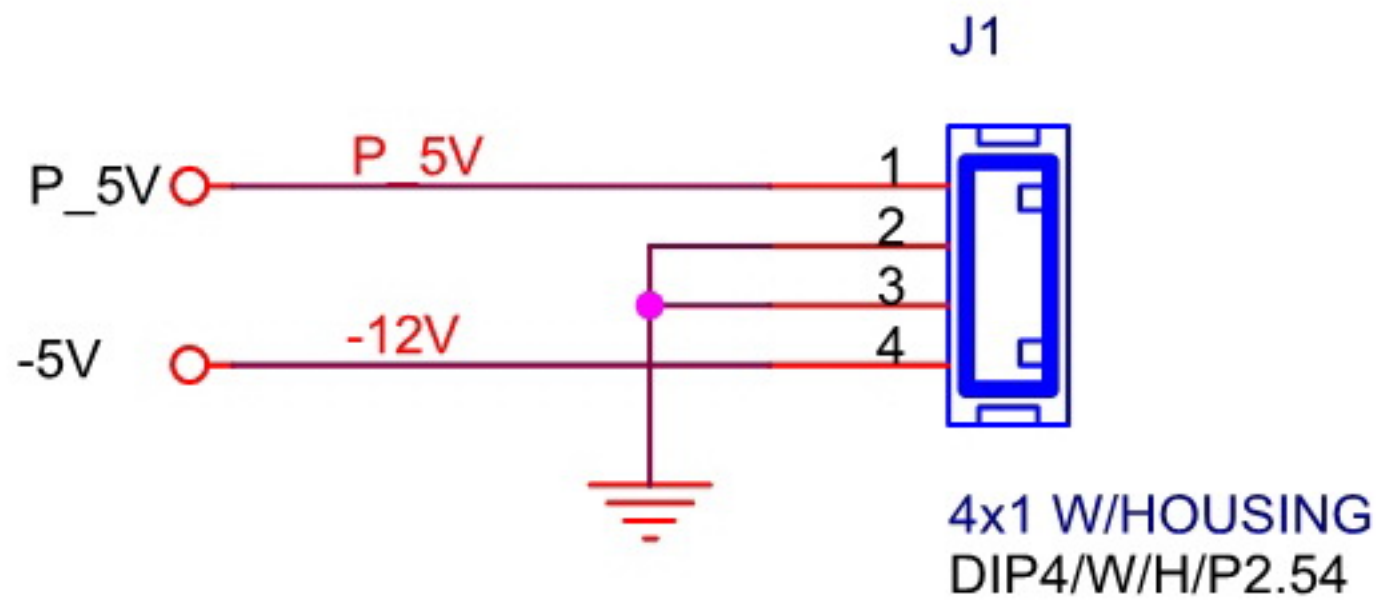
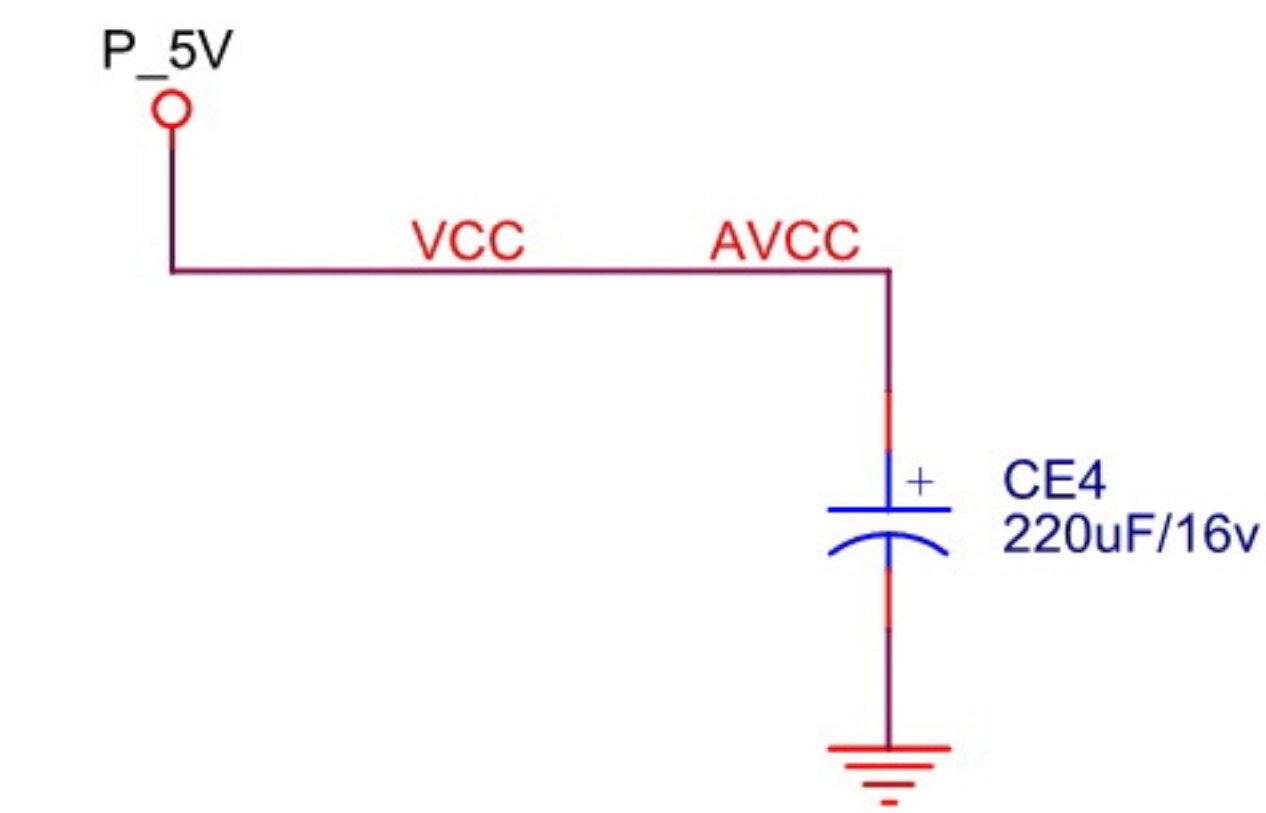
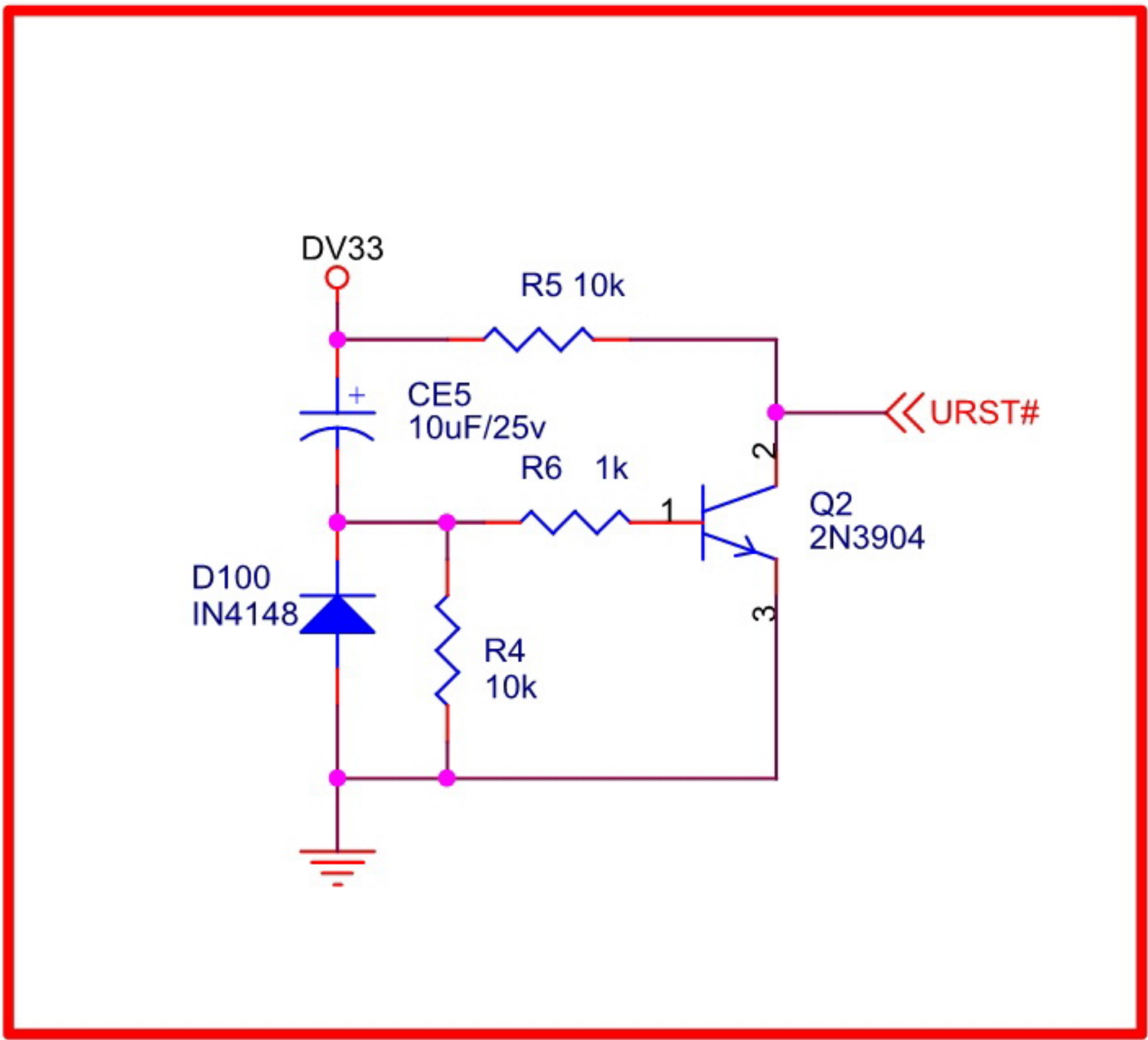
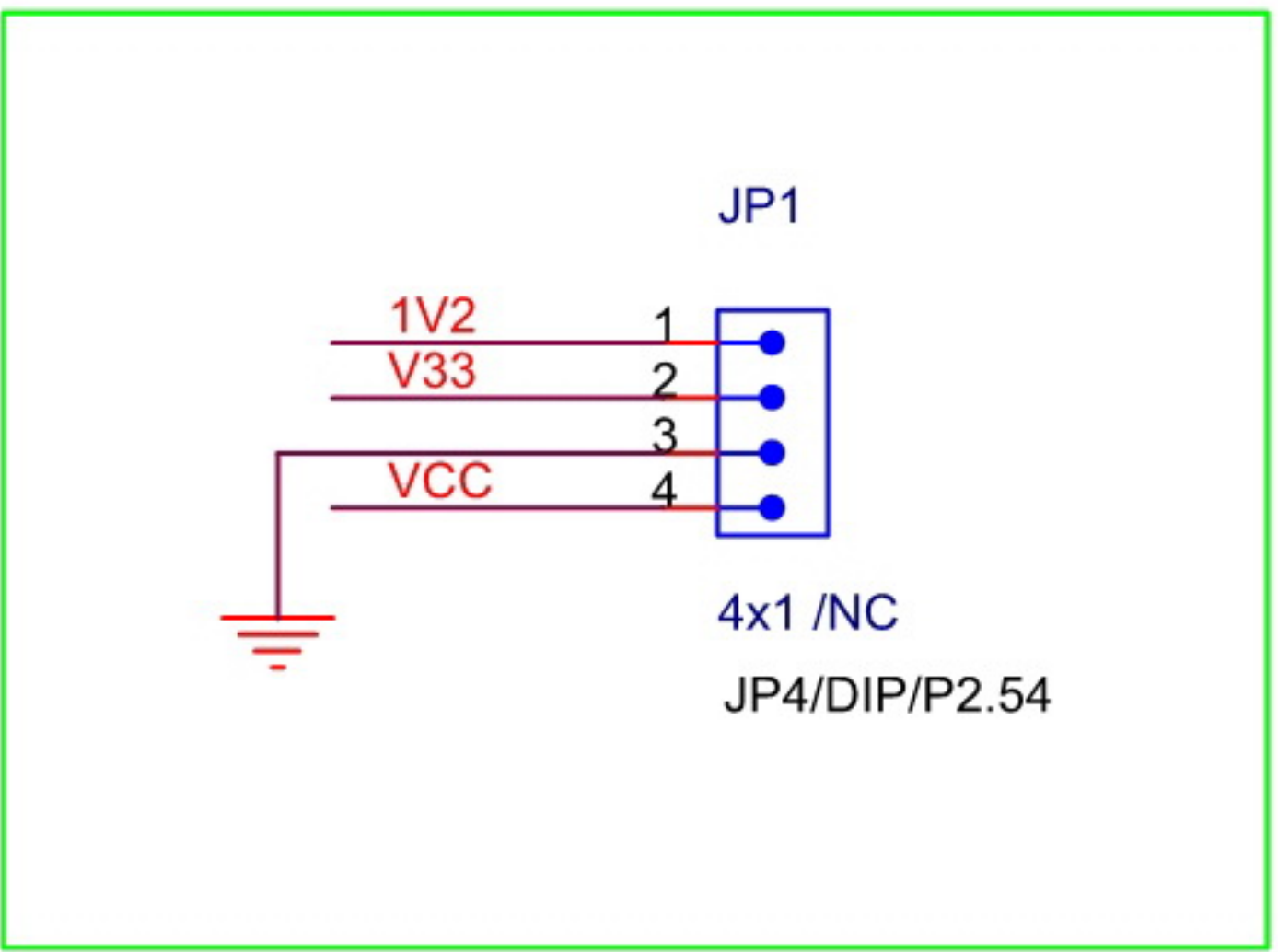
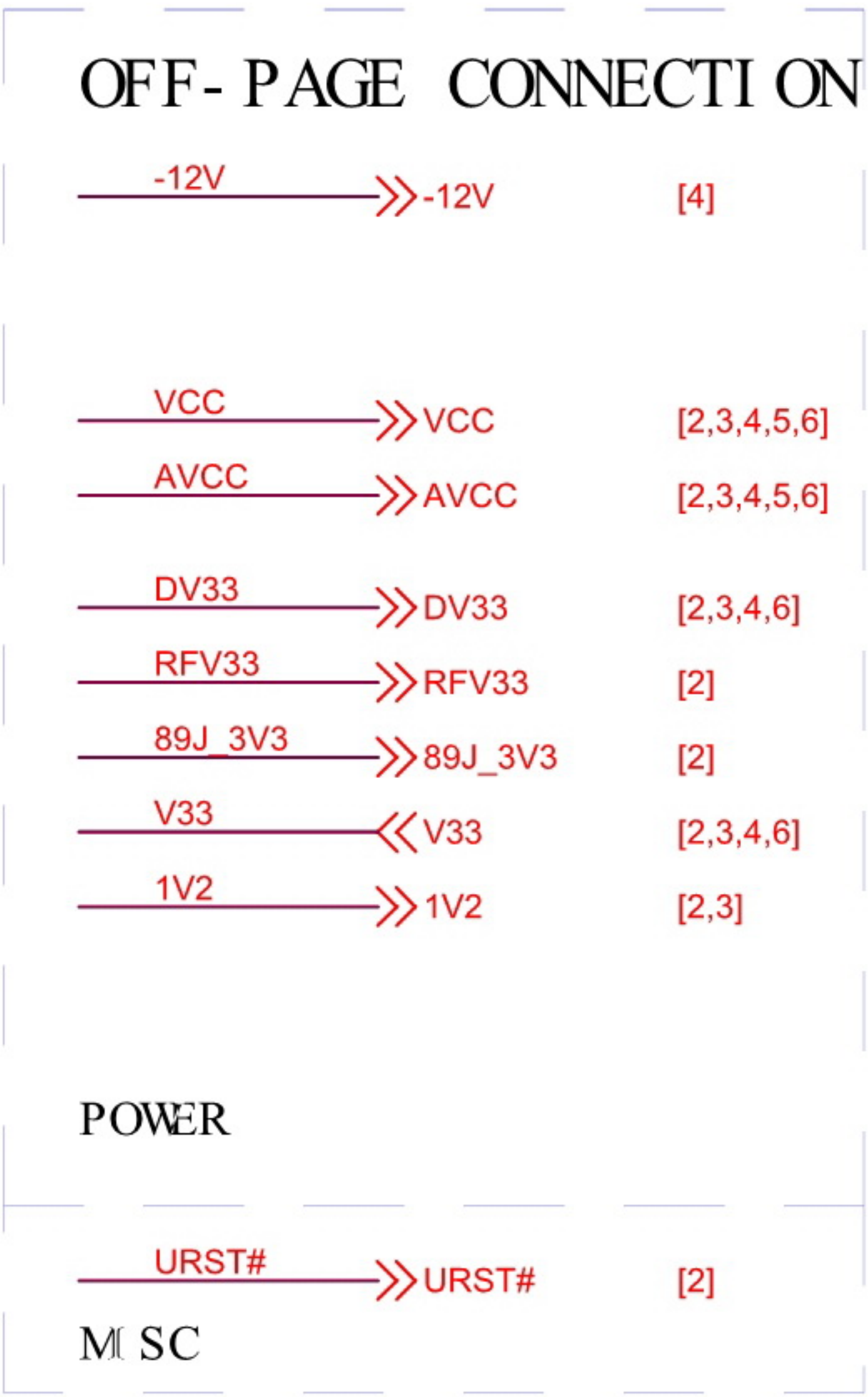
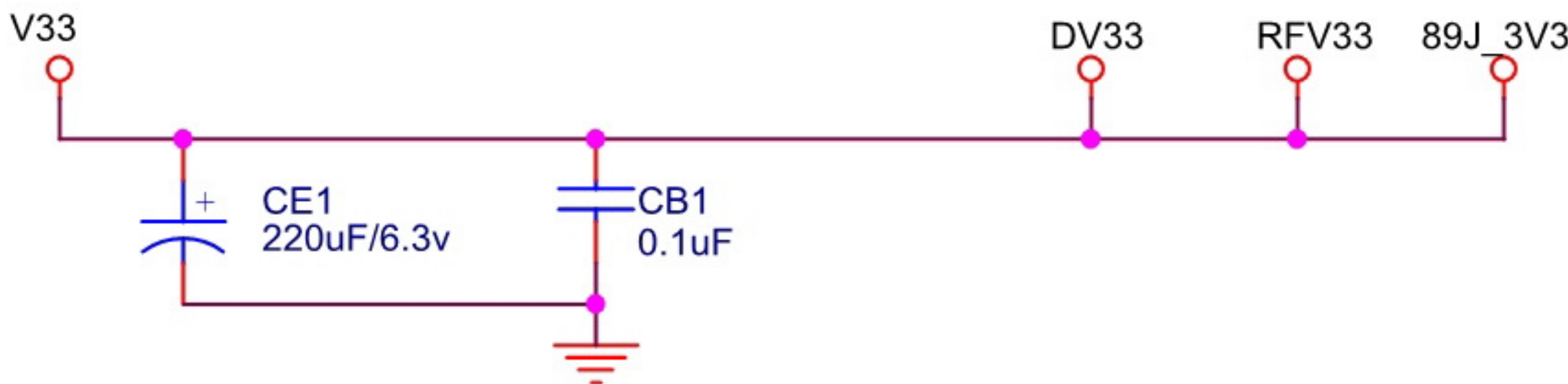
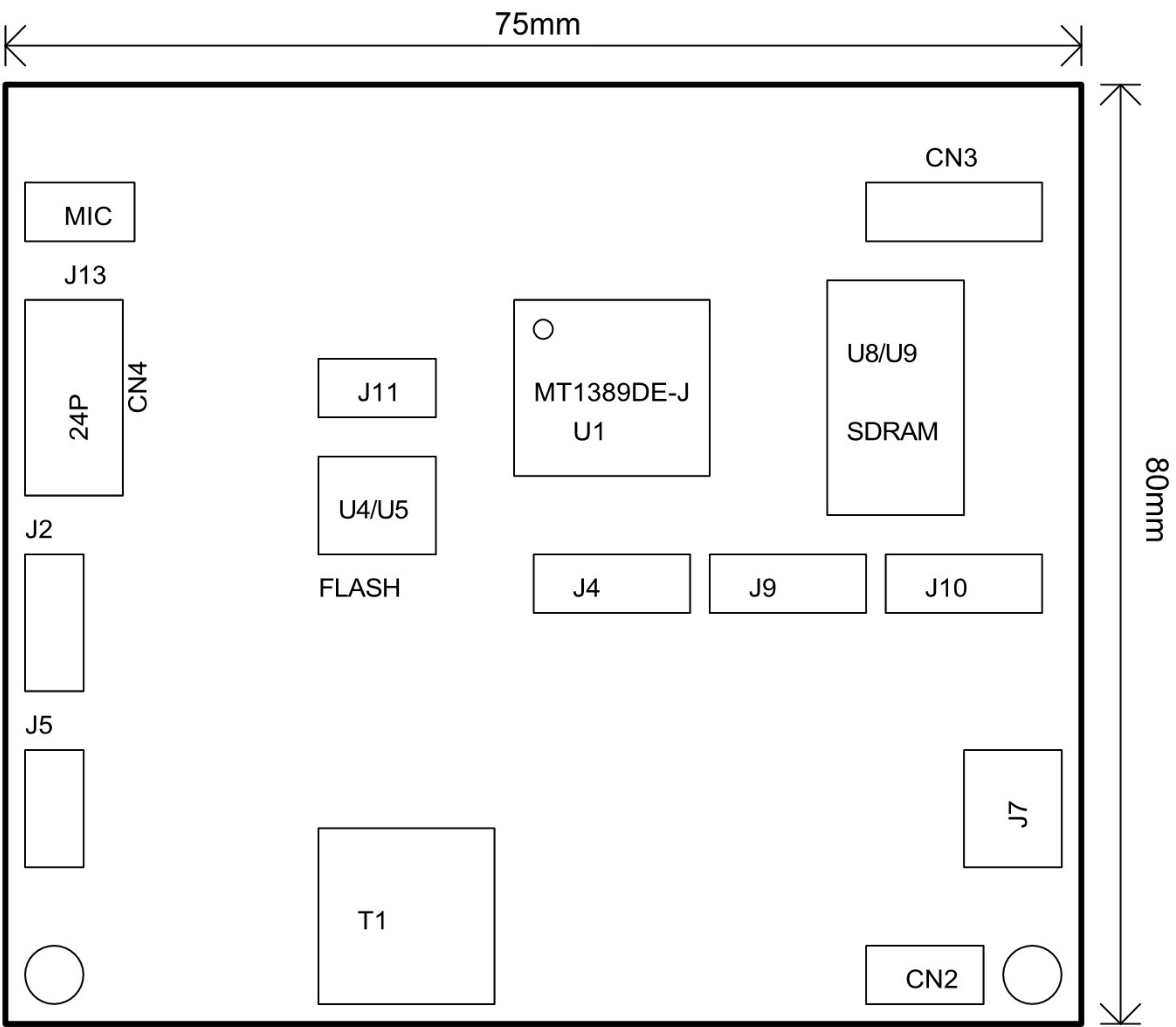


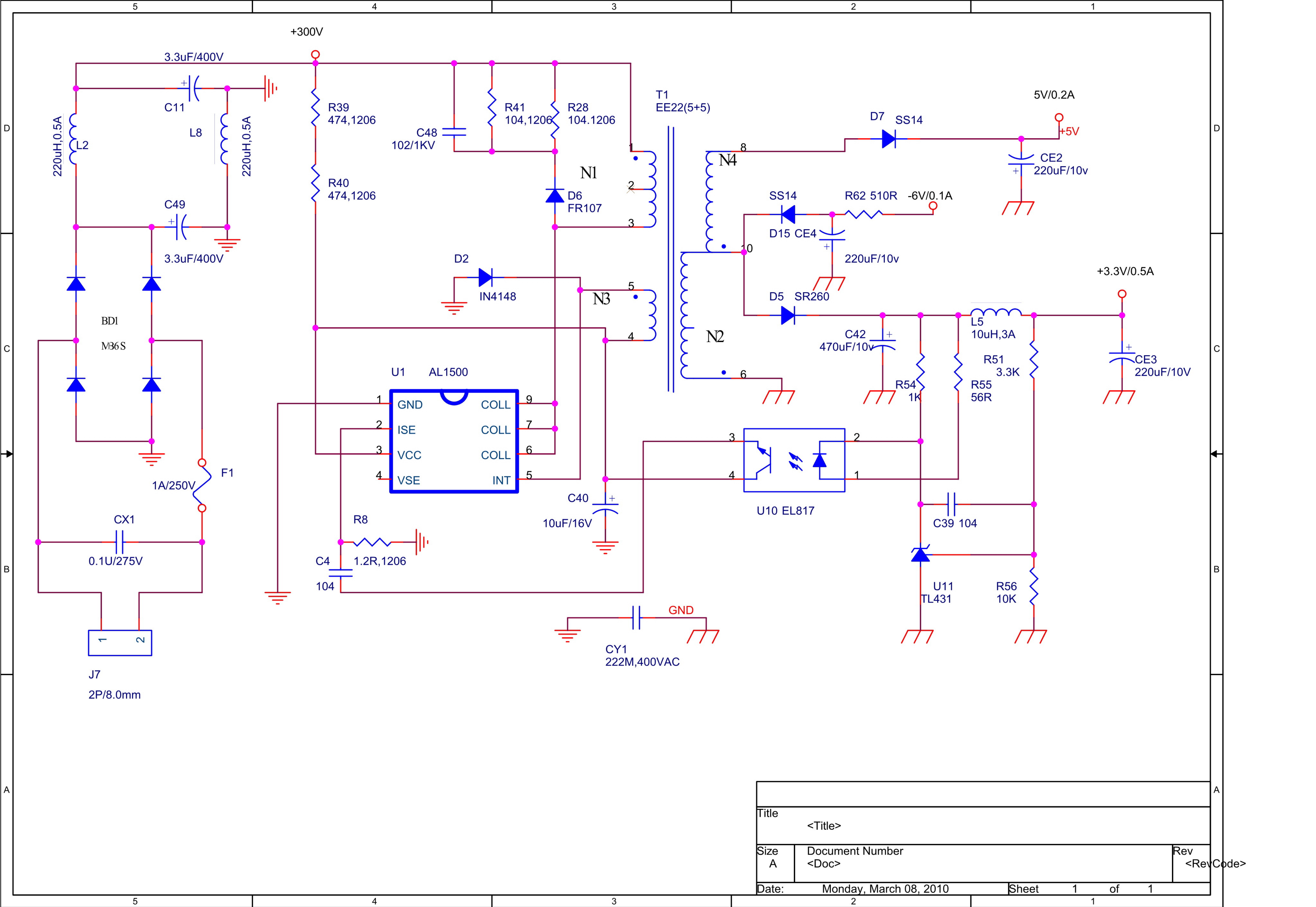
NO	DESCRIPTION	NO	DESCRIPTION
1	Bottom Board	16	SD/MMC/MS Card
2	Back Board	17	USB
3	Top Dust Hood	18	LED screen
4	Panel	19	PANEL PVC
5	MPEG Board	20	POWER switch
6	IC(25D80)	21	SCREW(PA2.8*8/10)
7	POWER Board	22	SCREW(KM3*6)
8	Plastic Frame	23	SCREW(PM3*15)
9	CD Door	24	Plastic SCREW Accessories
10	LENS(SONY313)	25	SCREW(PWM3*8)
11	VGA	26	SCREW(PM3*13)
12	POWER CABLE	27	SCREW(PA2.8*8)
13	PANEL PCB	28	SCREW
14	Panel control IC	29	SCREW(PWM3*6)
15	KEY	30	Sponge

COMMON1389J_HD850_AM5888_costdown

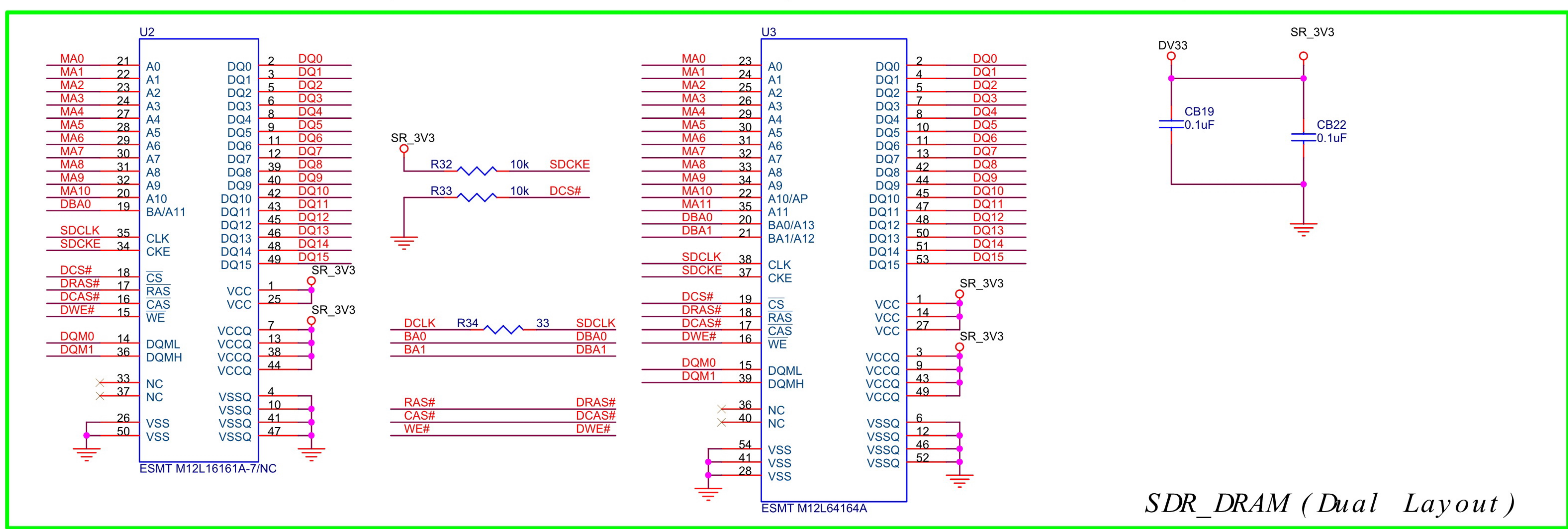
MT1389J DVD Board w/ Sanyo HD6x Series PUHs

- 1 INDEX & POWER / RESET
- 2 MT1389J LQFP128
- 3 SDRAM & FLASH & MOTOR
- 4 AUDIO OUT
- 5 AUDIO IN
- 6 VIDEO I / F
- 7 MCR & USB & GXYZ I / F
- 8 POWER

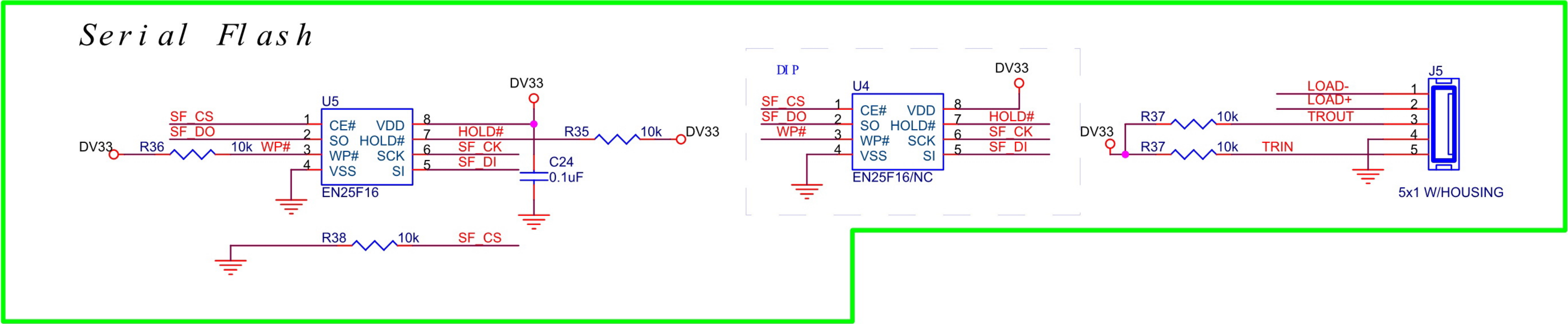




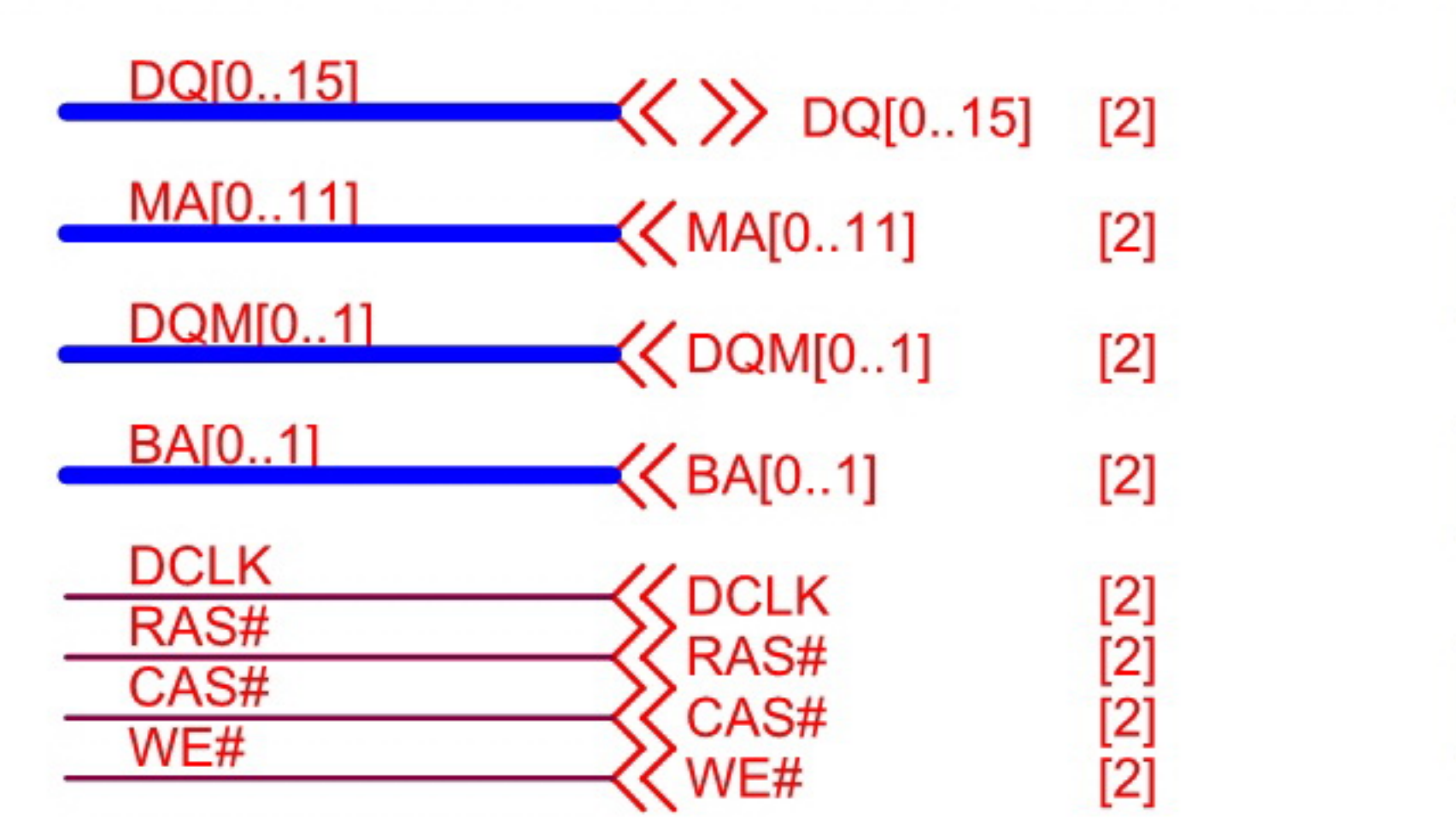
Title		
<Title>		
Size	Document Number	Rev
A	<Doc>	<RevCode>
Date:	Monday, March 08, 2010	Sheet 1 of 1



SDR_DRAM (Dual Layout)



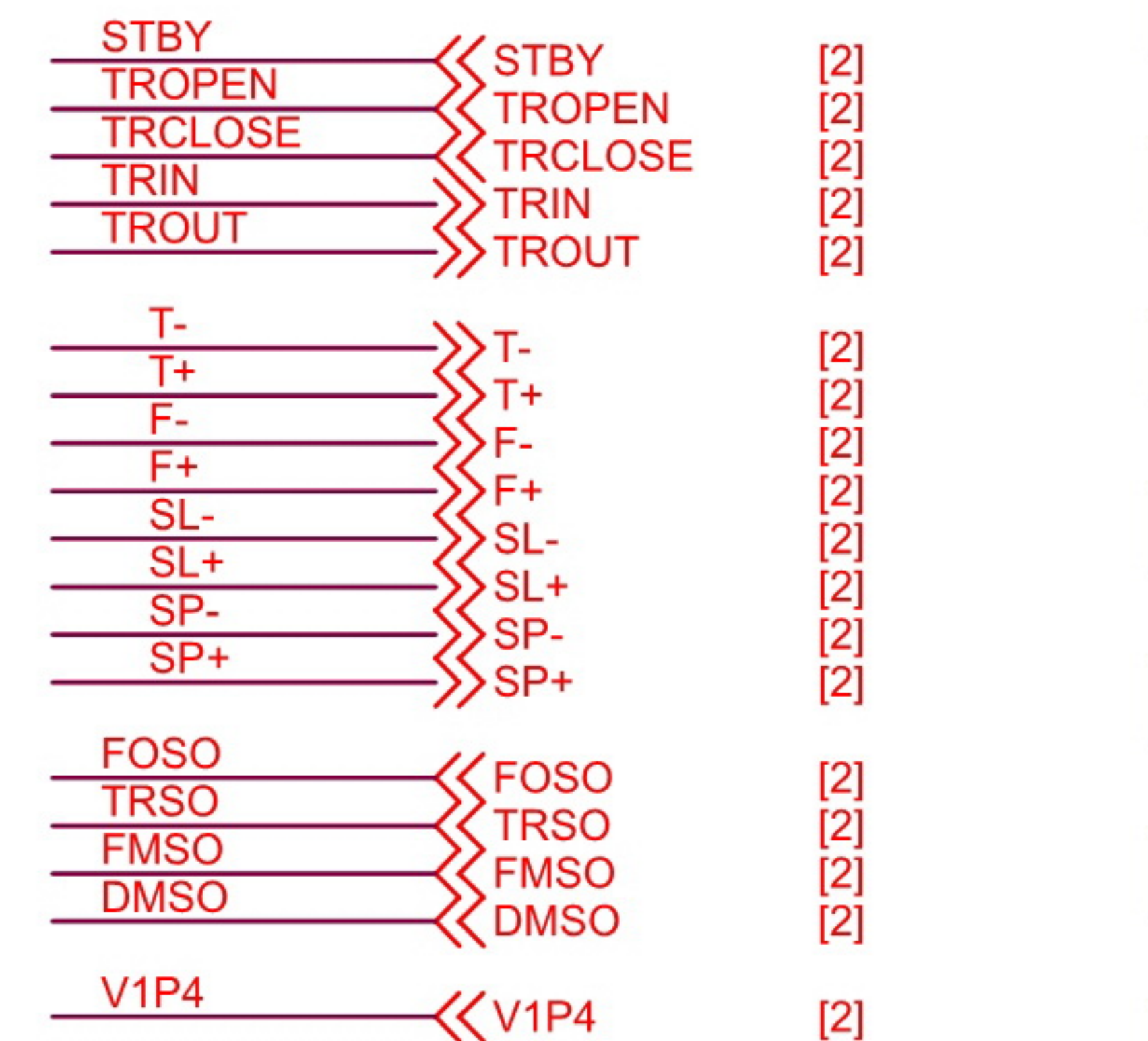
OFF- PAGE CONNECTI ON



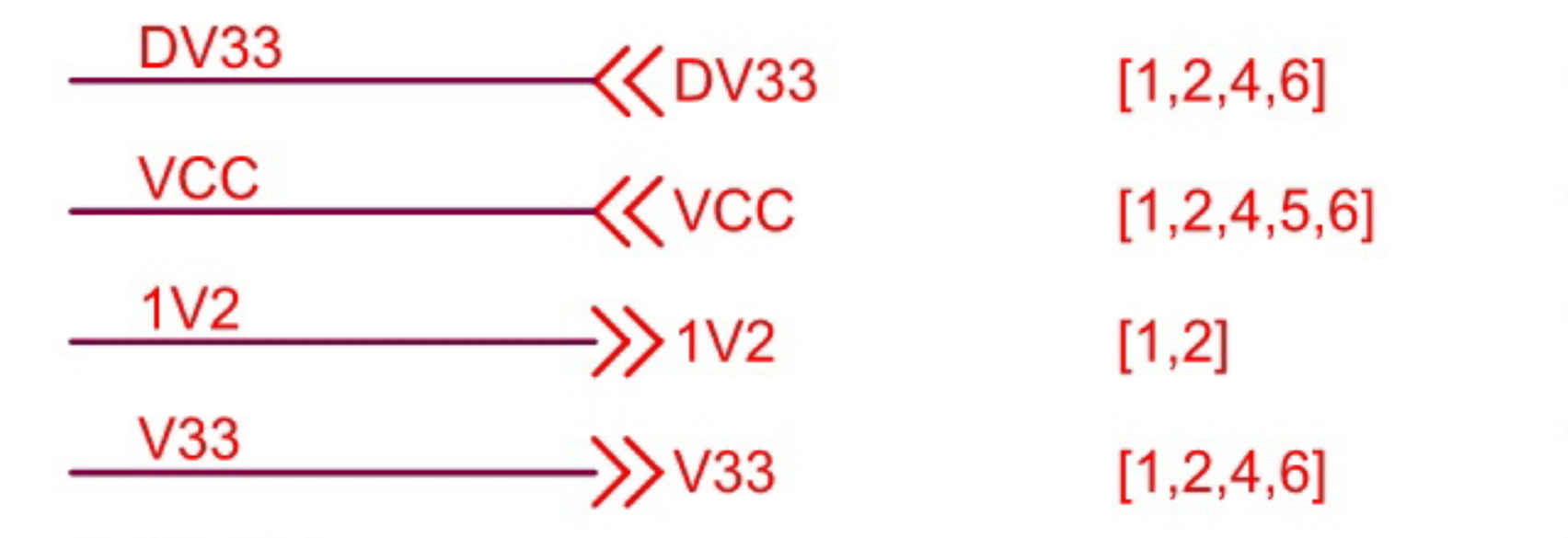
DRAM I / F



S- FLASH




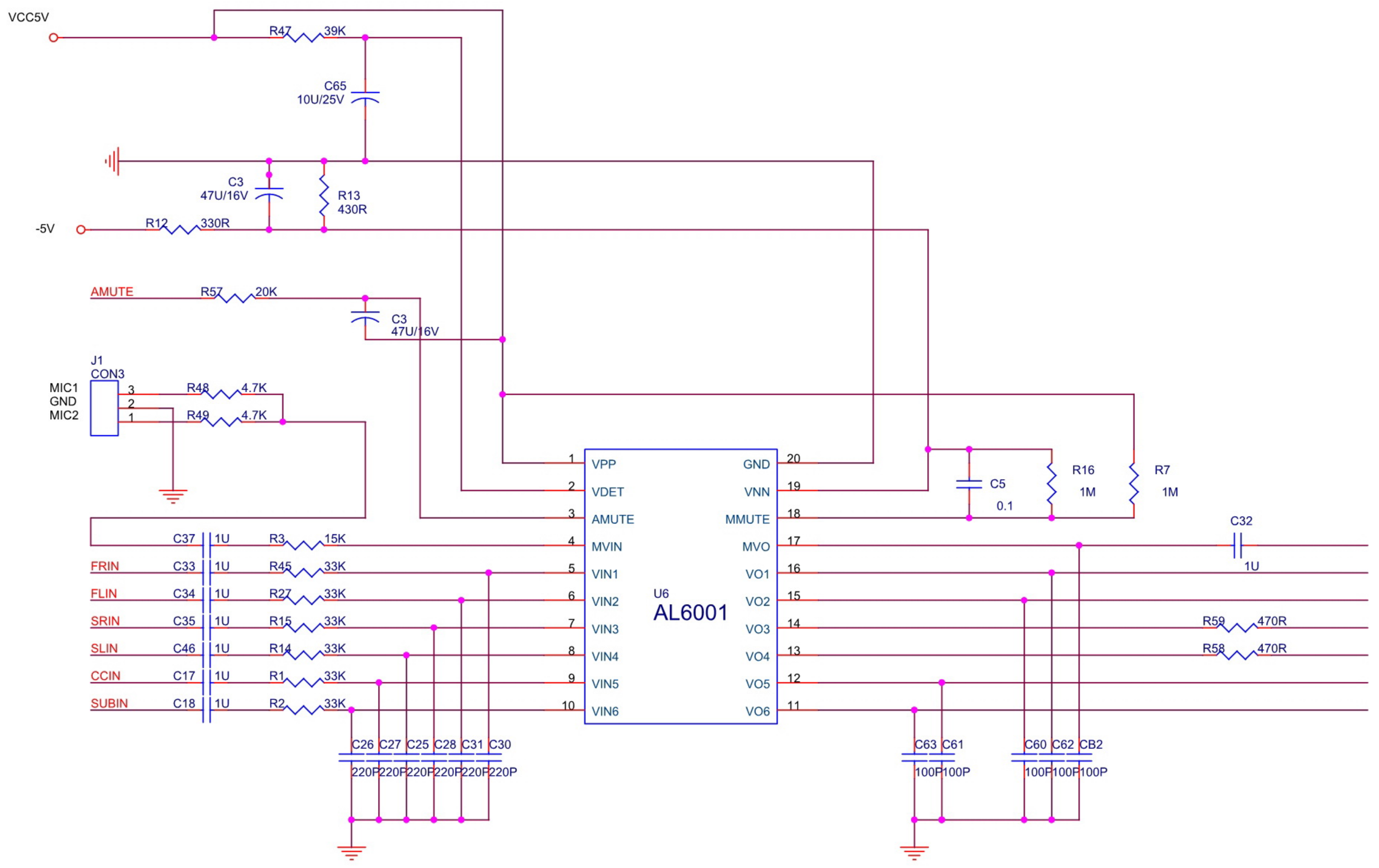
SERVO I / F



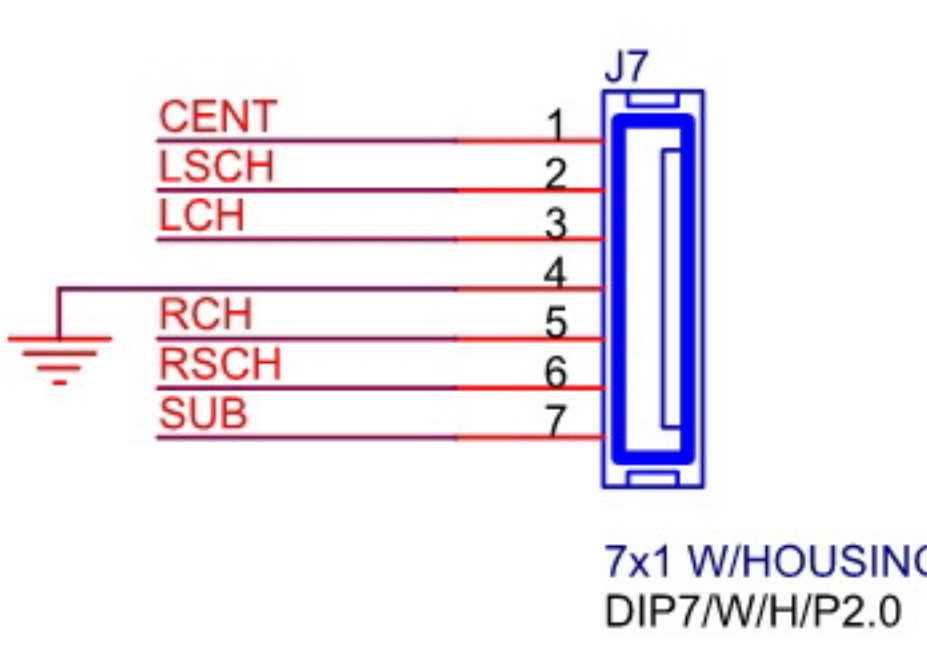
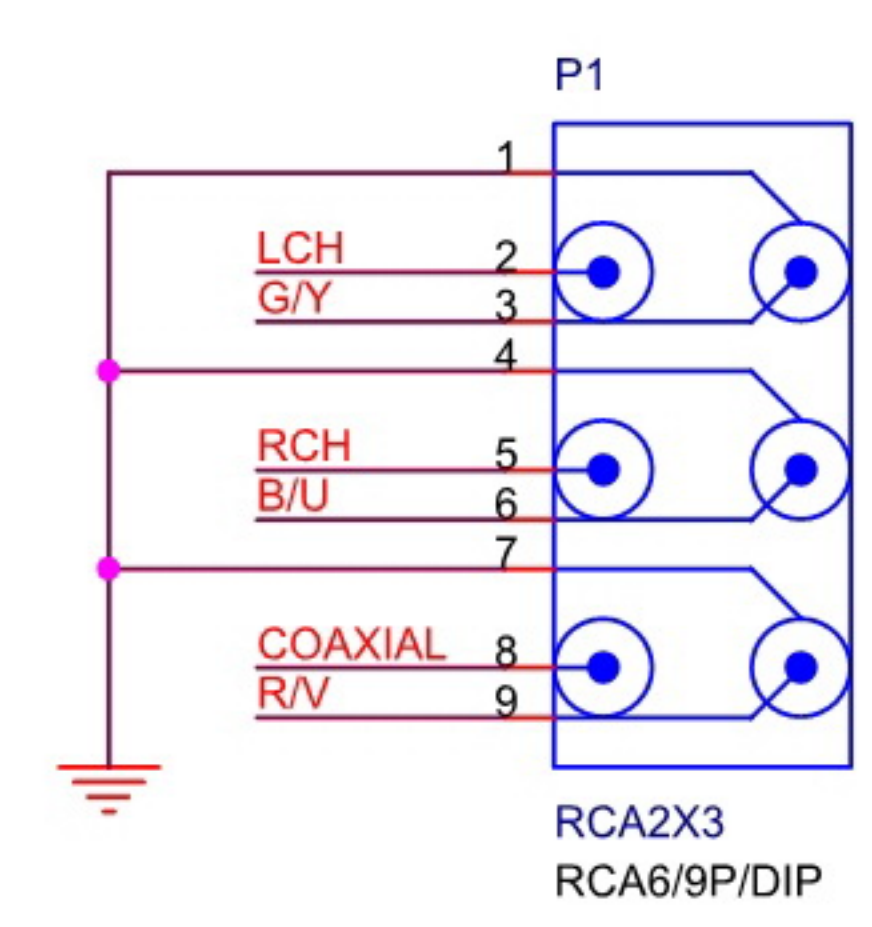
POWER

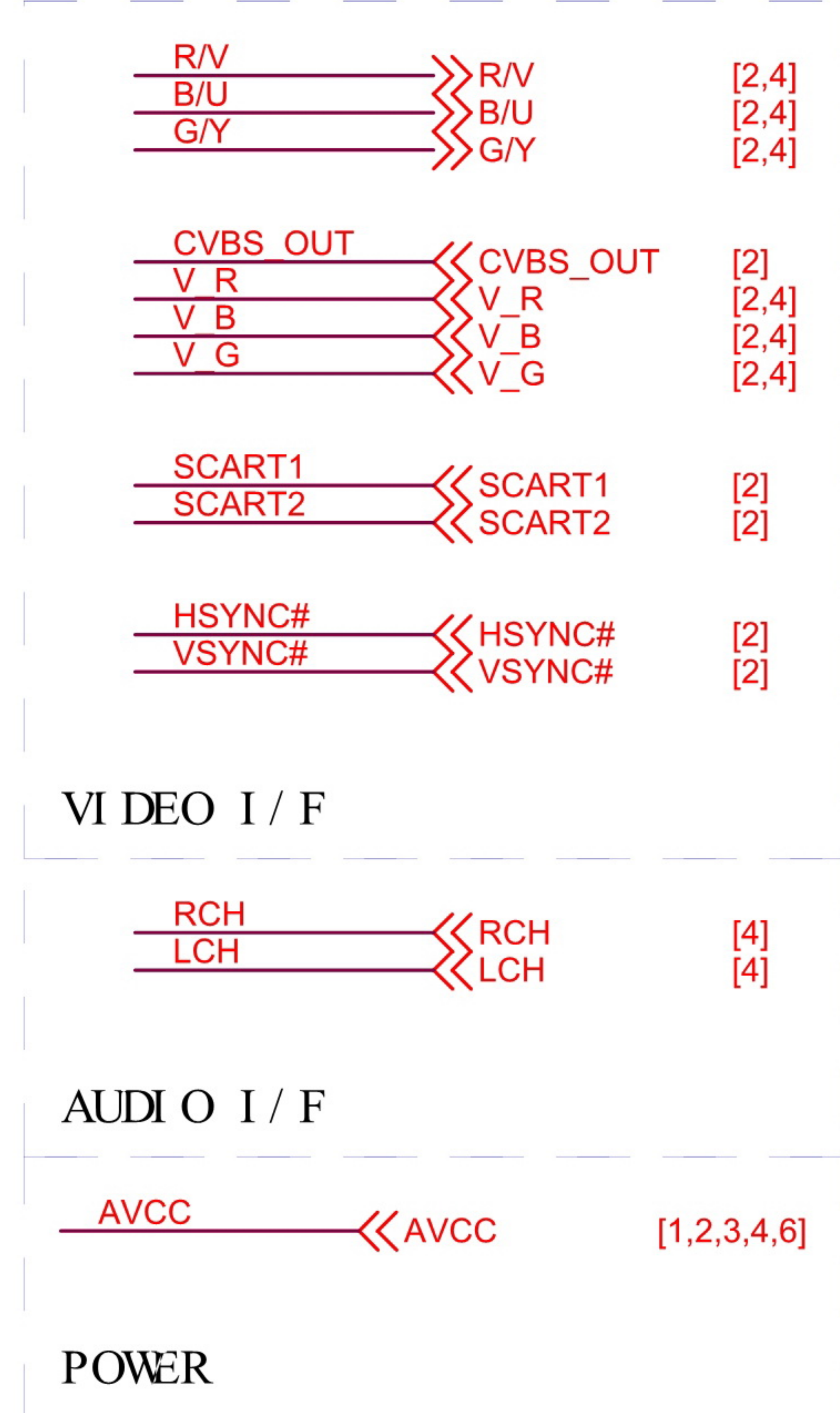
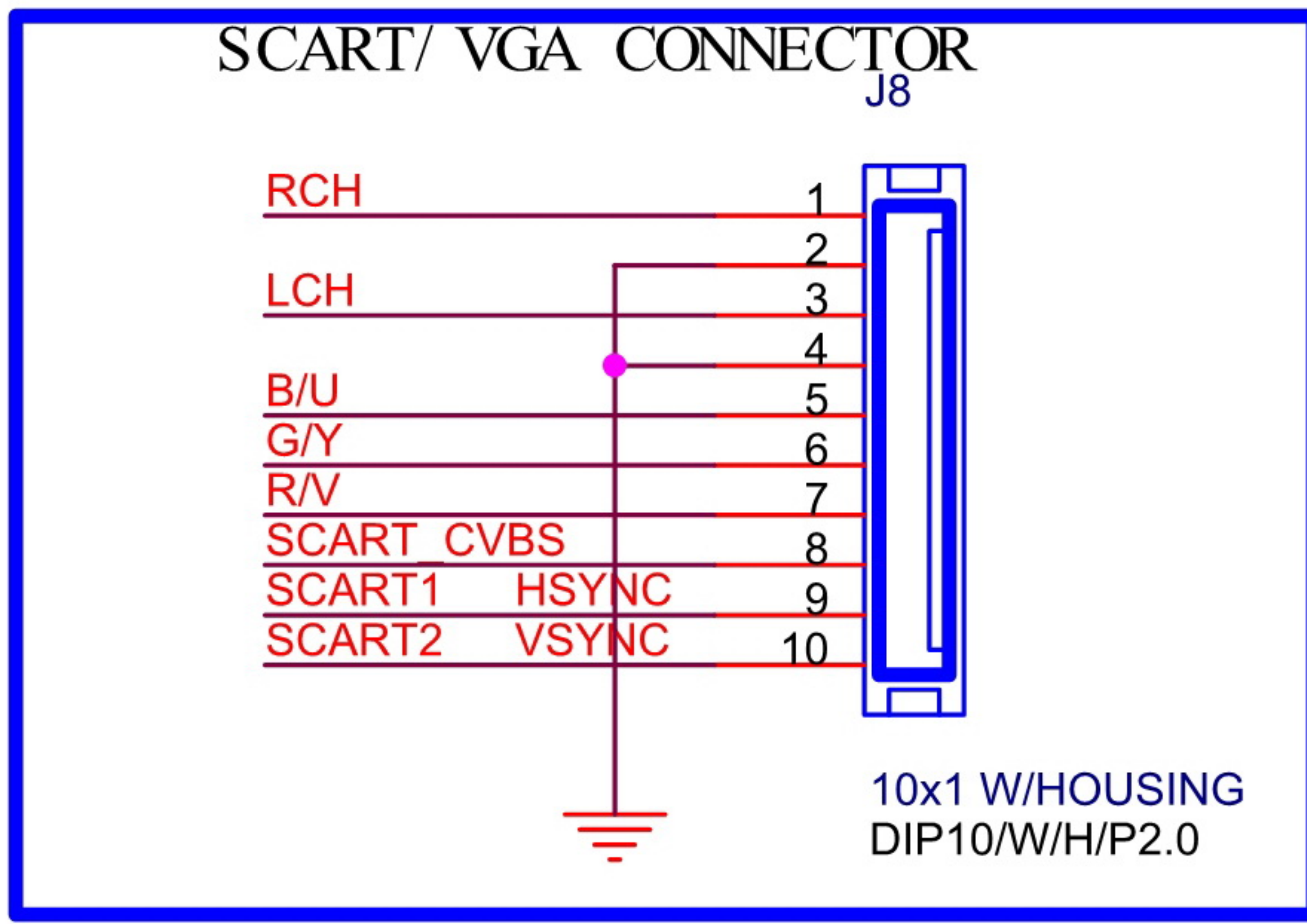
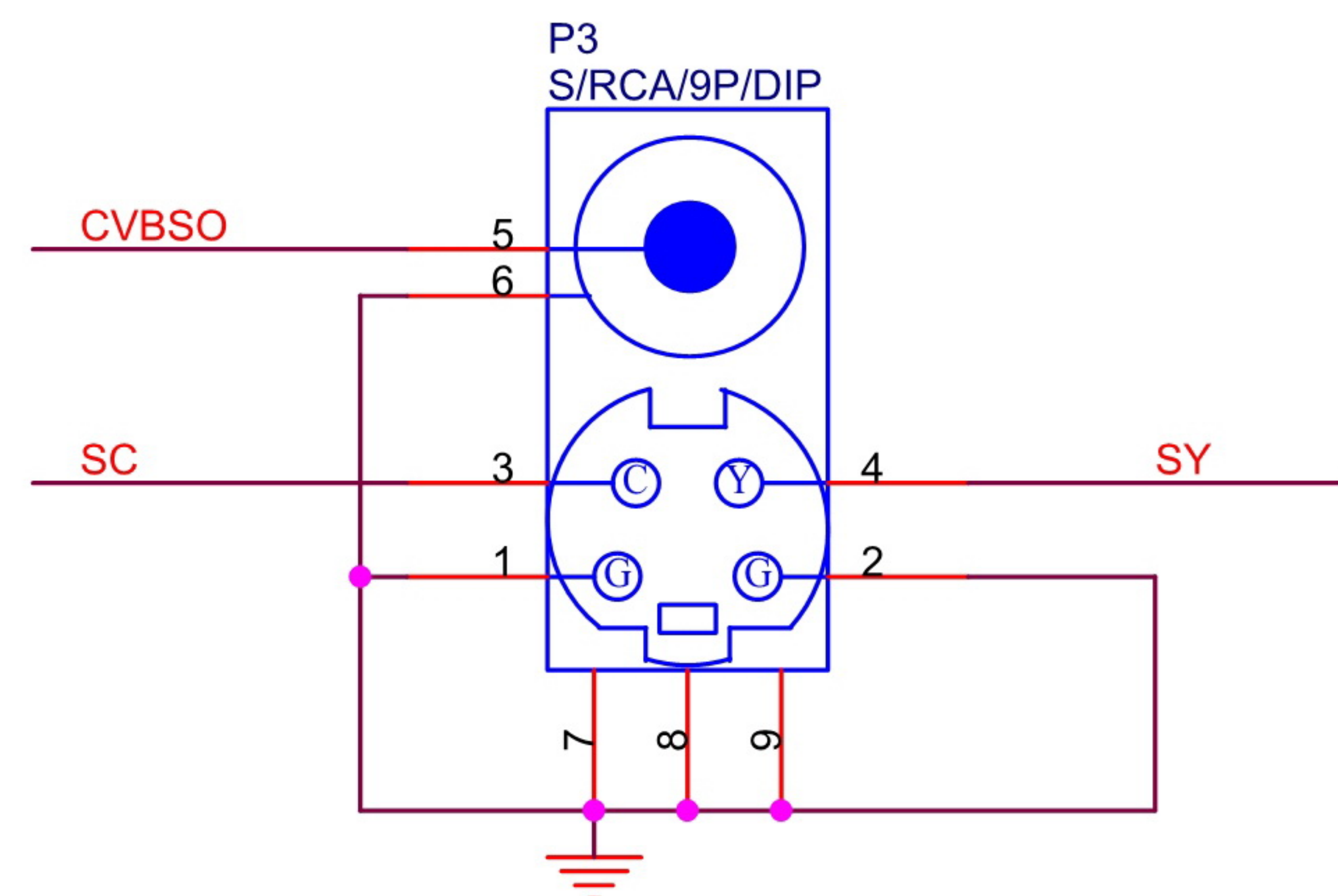
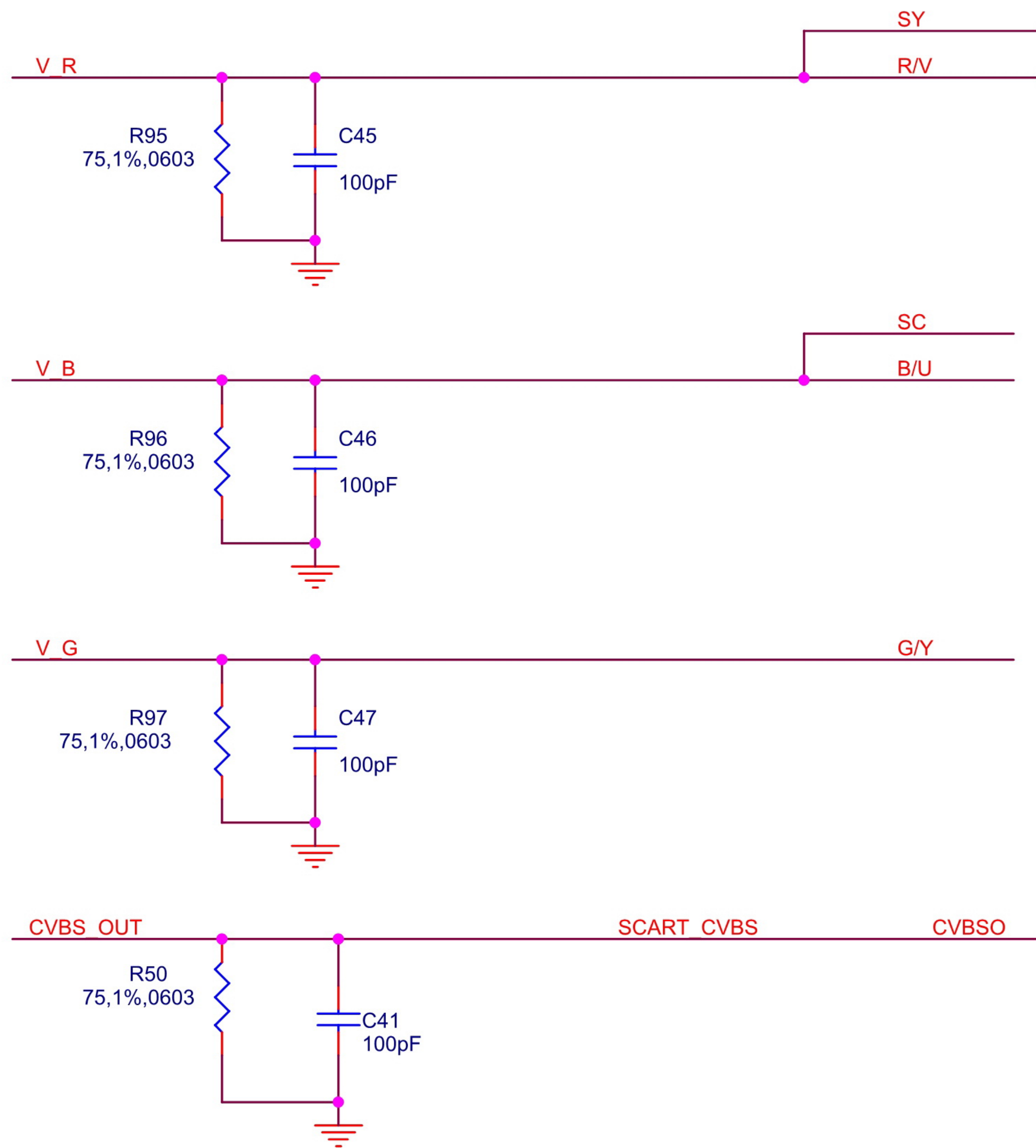
MediaTek Confidential


		MediaTek (ShenZhen) Inc.			
		Title			
		COMMON1389J_HD850_AM5888_Costdown			
		Size	Document Number	Drawn: guibing_luo	Rev
B	SDRAM / FLASH / MOTOR	Checked: Sam Xie	1		
Date:	Monday, March 08, 2010	Sheet	3 of 6		



OFF - PAGE CONNECTION		
AR	AR	[2]
AL	AL	[2]
ARS	ARS	[2]
ALS	ALS	[2]
ARF	ARF	[2]
ALF	ALF	[2]
ASPDIF	ASPDIF	[2]
AKIN1	AKIN1	[2]
AUDIO_MUTE	AUDIO_MUTE	[2]
RCH	RCH	[5]
LCH	LCH	[5]
AUDIO I / F		
R/V	R/V	[2,5]
B/U	B/U	[2,5]
G/Y	G/Y	[2,5]
VIDEO I / F		
-12V	-12V	[1]
DV33	DV33	[1,2,3,6]
AVCC	AVCC	[1,2,3,5,6]
Power		



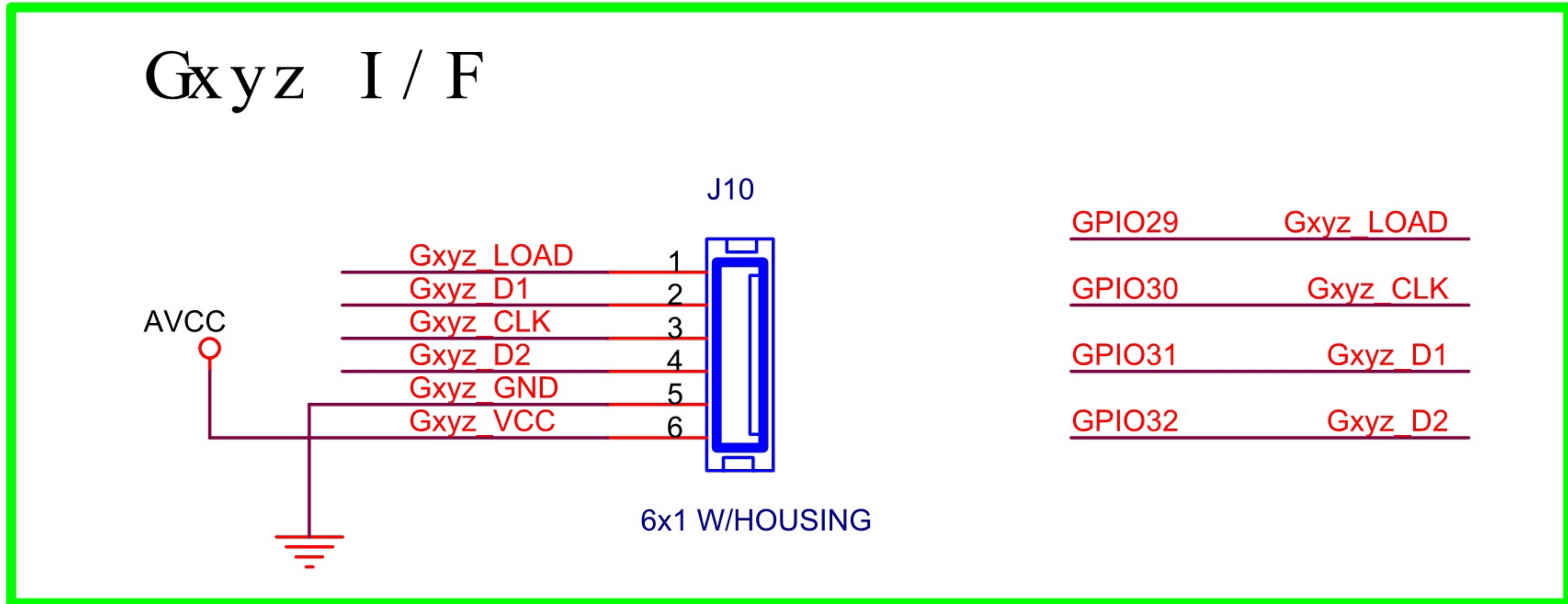
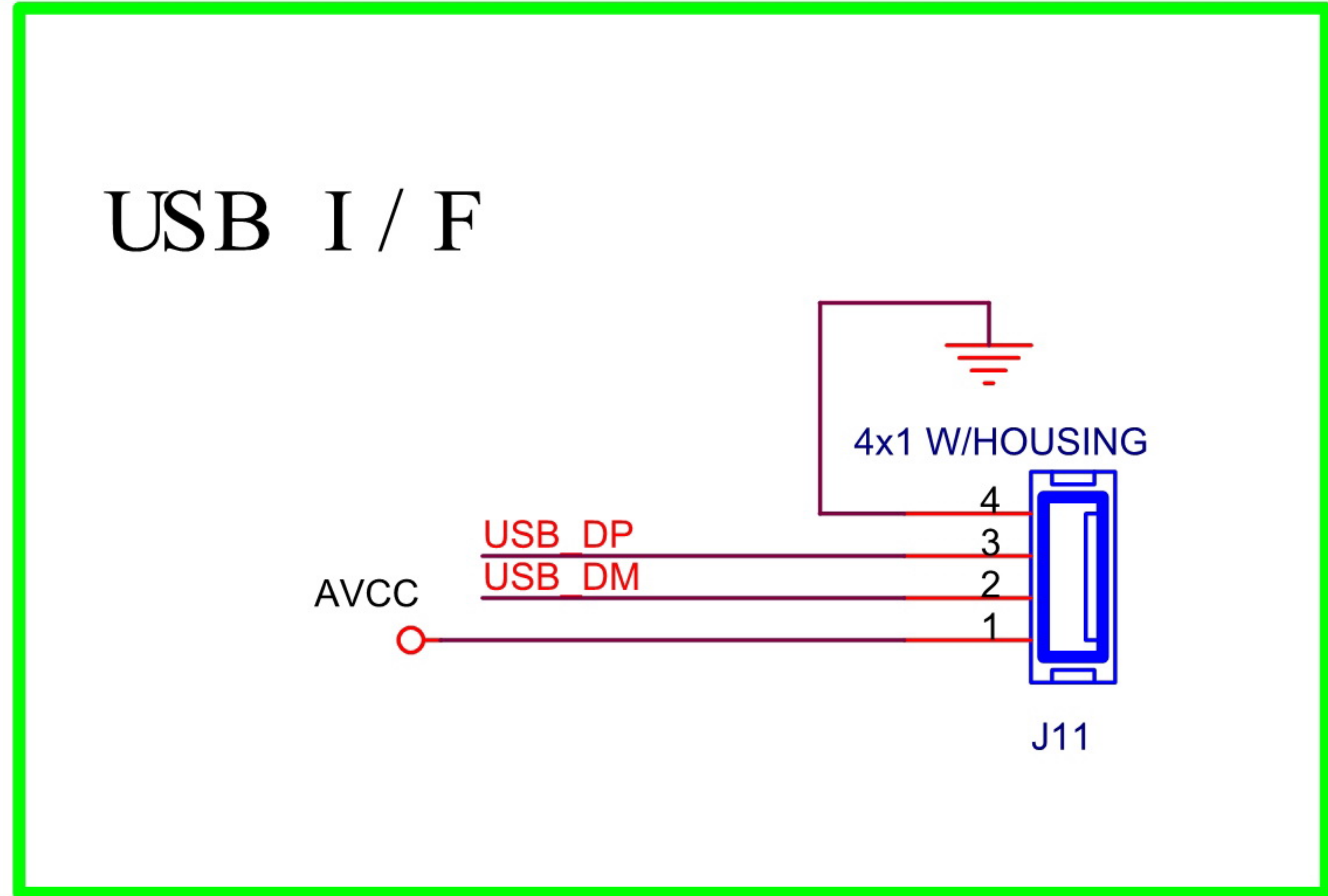
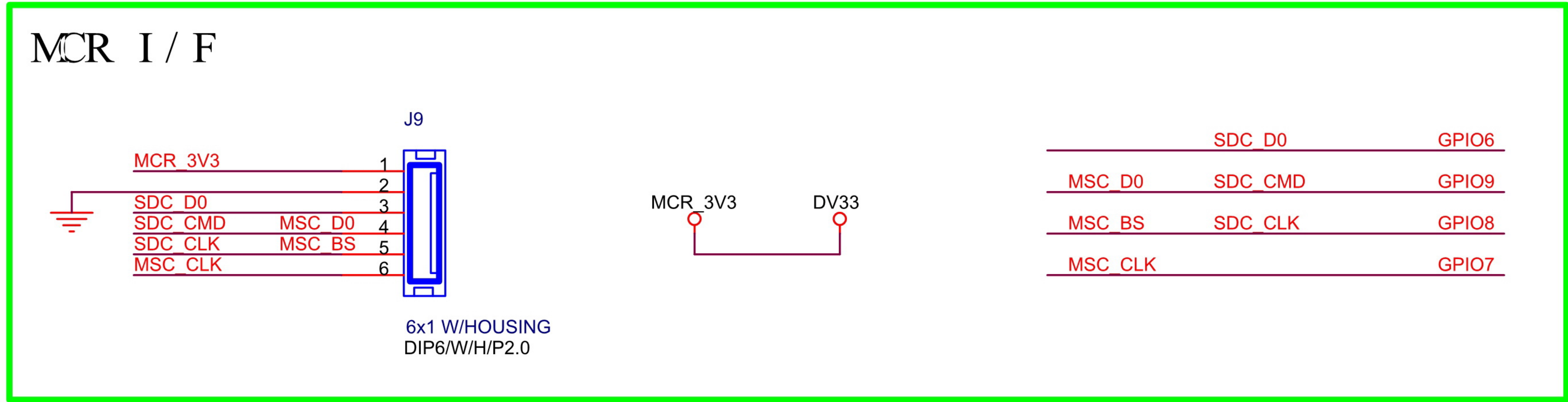




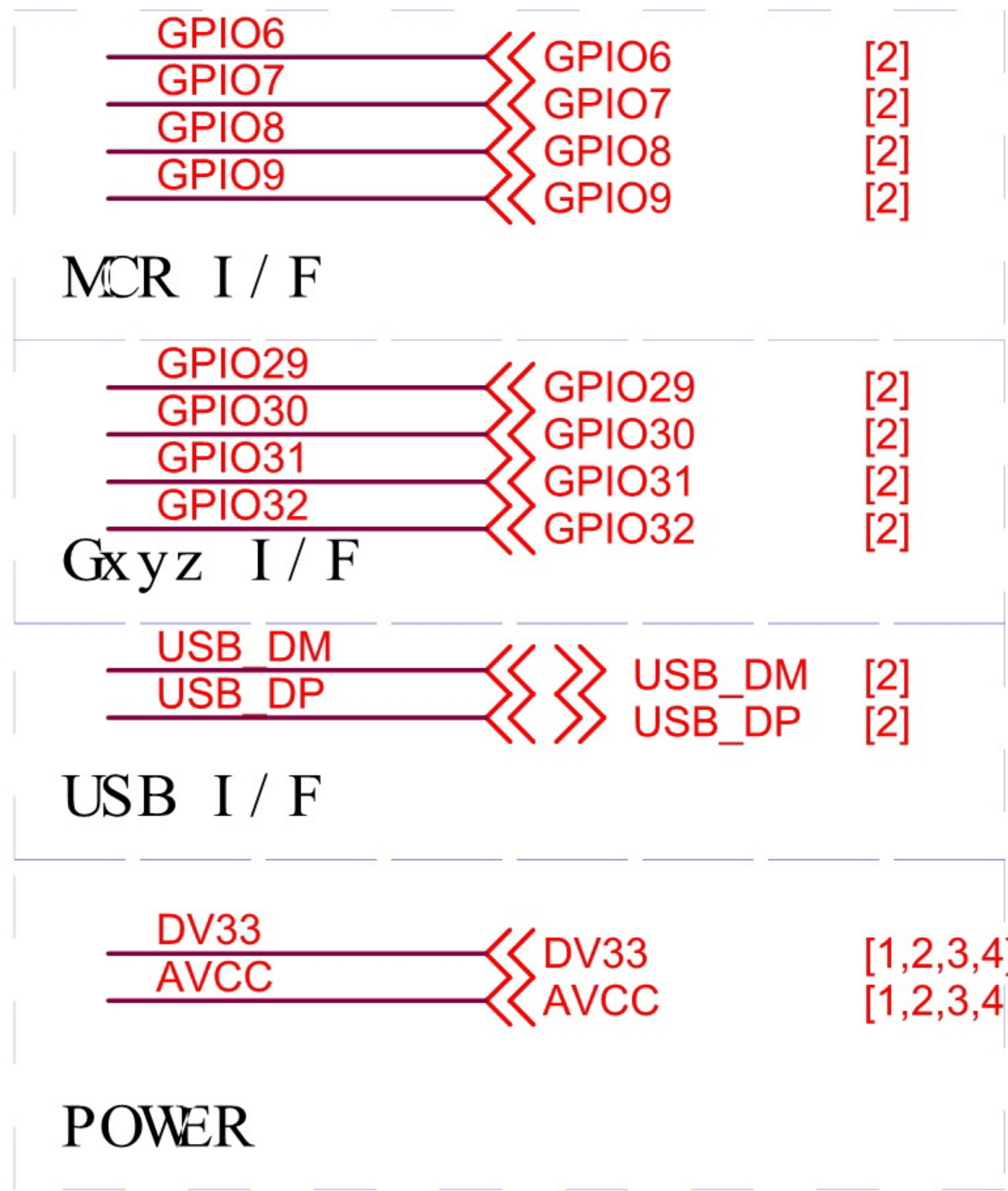
MediaTek (ShenZhen) Inc.

Title: **COMMON1389J_HD850_AM5888_Costdown**

Size	Document Number	Drawn: guibing_luo	Rev
Custom	Video I/F	Checked: Sam Xie	1
Date:	Monday, March 08, 2010		Sheet 5 of 6



OFF - PAGE CONNECTION



MediaTek (ShenZhen) Inc.			
Title			
COMMON1389J_HD850_AM5888_Costdown			
Size	Document Number		Drawn: guibing_luo
Custom	MCR&USB&Gxyz I/F		Rev 1
Date: Monday, March 08, 2010		Checked: Sam Xie	
		Sheet 6 of 6	

MediaTek Confidential